

# PRODUCTION INFRARED DRYERS

## ECONORED II SERIES

**15 YEAR  
HEATER WARRANTY**



**ER-II-30**



**ER-II-54**

- Digital belt speed display for more accurate control
- Focused exhaust system to remove fumes/moisture within chamber
- Excellent air flow to cool the skin of the dryer
- Cures plastisol, water-based and discharge inks!

**CE CERTIFIED**  
BY CERTIFICATION EXPERTS  
THE NETHERLANDS

**30" Belt Version**

**54" Belt Version**

**ER-II-30**

**ER-II-30-2**

**ER-II-54**

**ER-II-54-2**

Standard Wattage	7,200w	14,400w	14,400w	28,800w
Belt Width x Length	30" x 7¼' (76.2 x 220cm)	30" x 10¼' (76.2 x 312cm)	54" x 7¼' (137 x 220cm)	54" x 10¼' (137 x 312cm)
Heater Width***	24" (61cm)	24" (61cm)	48" (122cm)	48" (122cm)
Chamber (tunnel) Length	3' (91.4cm)	6' (183cm)	3' (91.4cm)	6' (183cm)
	<b>CURE TIMES</b>			
Plastisol @ 25 secs.**	300+/hr	600+/hr	600+/hr	1,200+/hr
Water Based/Discharge @ 70 secs.**	100+/hr	200+/hr	200+/hr	400+/hr

### Features

- HEAVY DUTY** "X-Series" Conveyor Belt Tracking System
- PRECISE** Infrared Focusing System provides more power for less \$\$
- ADJUSTABLE** 2" - 7" (5 - 17.7 cm) belt-to-heater height adjustment
- ACCURATE** Digital PID Temperature controller is accurate to +/-1° F
- CONSISTENT** Heavy duty DC belt speed motor with digital voltage display
- INNOVATIVE** Engineered to be shorter and smaller with high heat and production.
- EXPANDABLE** Add heat chambers and belt extensions. (HD Drive required over 17' long)

### Options

- Add heat chambers @ 3' (.91m) long
- Belt extensions front or rear, 18" (46 cm) increments
- 3 Phase & 208, 380, 480 voltages available
- Exhaust Hood, provides extra fume extraction
- Hat support rail
- Locking casters for easy mobility
- Reversing belt / HD Drive

\* Production speeds are estimates and will vary depending on ink manufacturer, humidity of shop, and other variables.  
\*\* Production speeds are estimates are based on 16" centers and will vary depending on ink manufacturer, humidity of shop, and other variables.



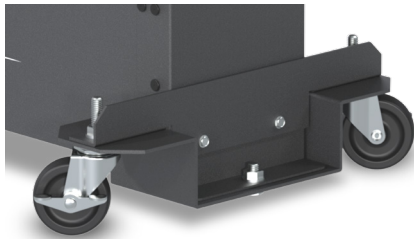
# INFRARED DRYER ACCESSORIES



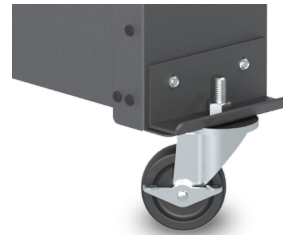
**SI-27**  
Stand for D-100



**SI-27 W/  
SI-27-DEMT**  
Stand for D-1000

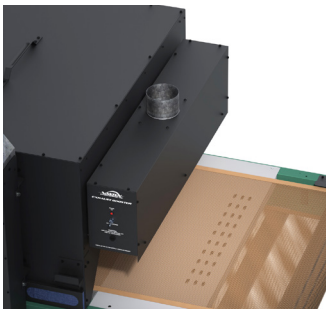


**WS-EDD**  
Drop Down Wheel Set for  
DB, LR & EC-I Dryers



**WS-EC**  
Standard Wheel Set for  
all non-tabletop Dryers

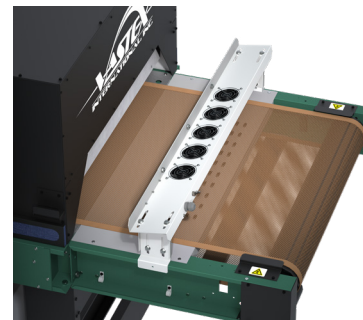
**WS-EHD**  
Drop Down Wheel Set for  
EC-II, ER & BR Dryers



## EXHAUST HOOD

### FEATURES

- Removes fumes at exit the dryer
- EXH-30 fits 30" (76cm) wide belts
- EXH-54 fits 54" (137cm) wide belts
- Available in 120v or 240v



## CONVEYOR AIR BAR

### FEATURES

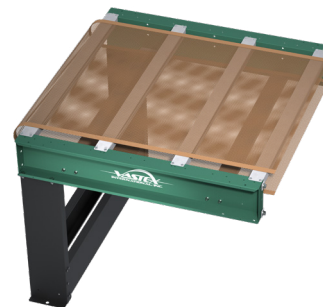
- Cools ink as garments exit the dryer
- CAB-30 fits 30" (76cm) wide belts
- CAB-54 fits 54" (137cm) wide belts
- Work on many non-Vastex dryers
- Available in 120v or 240v



## HAT SUPPORT RAIL

### FEATURES

- Angles hats so front is parallel with heaters
- HR-1 fits EconoRed II dryers
- HR-2 fits EconoRed III & BigRed Dryers



## CONVEYOR EXTENSIONS

Extend your conveyor in  
18" (46cm), 36" (92cm) and  
54" (137cm) increments



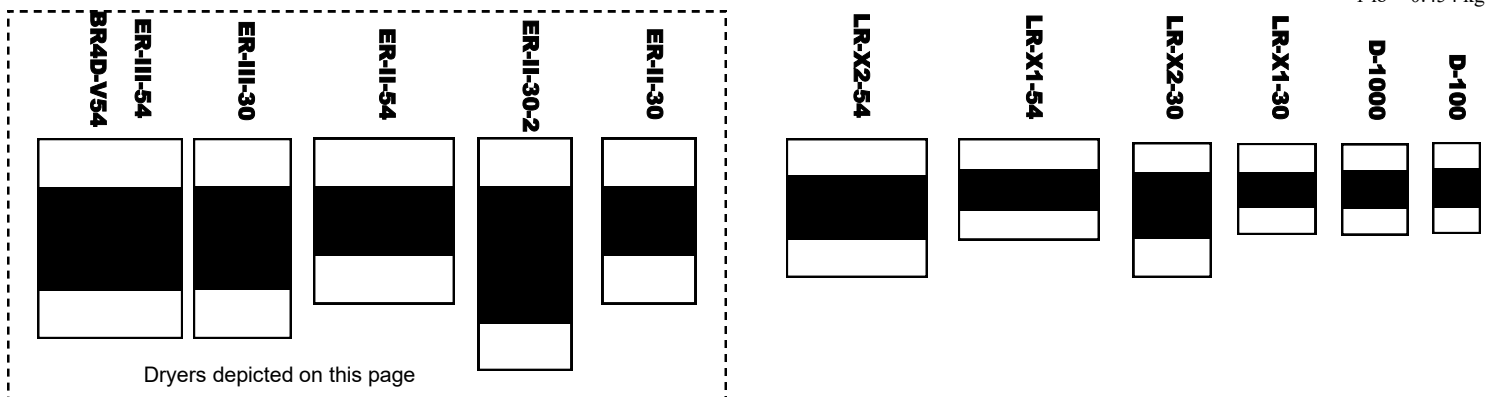
# EconoRed & BigRed

# Technical Specifications

	ER-II-30	ER-II-54	ER-III-30	ER-III-54	BR4D-V30S	BR4D-V54S
Heater Warranty	15 Year	15 Year	15 Year	15 Year	15 Year	15 Year
Defect Warranty	3 Year	3 Year	3 Year	3 Year	3 Year	3 Year
Shirts / Hr* - (Plastisol) (Waterbased/Discharge)	300+ @ 25 secs. 100+ @ 70 secs.	600+ @ 25 secs. 200+ @ 70 secs.	450+ @ 25 secs. 150+ @ 70 secs.	900+ @ 25 secs. 300+ @ 70 secs.	475+ @ 25 secs. 216+ @ 50 secs.	950+ @ 25 secs. 432+ @ 50 secs.
Shirts/hr* - DTG/digital	N/A	N/A	N/A	N/A	72 @ 2.5 min, 60 @ 3 min. 30 @ 6 min.	144 @ 2.5 min, 120 @ 3 min. 60 @ 6 min.
Time in Tunnel Range (mm:ss)	00:11 - 01:39	00:11 - 01:39	00:17 - 02:29	00:17 - 02:29	00:12 - 01:45	00:12 - 01:45
Belt Speed	1.8 - 23 FPM (0.5 - 7 MPM)	1.8 - 23 FPM (0.5 - 7 MPM)	1.8 - 23.6 FPM (0.6 - 7.2 MPM)	1.8 - 23.6 FPM (0.6 - 7.2 MPM)	1.8 - 23.6 FPM (0.6 - 7.2 MPM)	1.8 - 23.6 FPM (0.6 - 7.2 MPM)
Exhaust (Free Air)	380 CFM (10.7 CMM)	380 CFM (10.7 CMM)	380 CFM (10.7 CMM)	550 CFM (15.6 CMM)	500 CFM (14.2 CMM)	700 CFM (19.8 CMM)
Exhaust Stack Diameter	8" (20.32 cm)	8" (20.32 cm)	8" (20.32 cm)	8" (20.32 cm)	6" (15.24 cm)	8" (20.32 cm)
Overall Length	87" (221 cm)	87" (221 cm)	105" (267 cm)	105" (267 cm)	105" (267 cm)	105" (267 cm)
Overall Width	45.2" (114.8 cm)	69.2" (175.8 cm)	45.2" (114.8 cm)	69.2" (175.8 cm)	47.3" (120.2 cm)	71.4" (181.4 cm)
Overall Height	60.9" (154.7 cm)	60.9" (154.7 cm)	60.9" (154.7 cm)	60.9" (154.7 cm)	51.6" (131.1 cm)	51.6" (131.1 cm)
Belt Width	30" (76 cm)	54" (137 cm)	30" (76 cm)	54" (137 cm)	30" (76 cm)	54" (137 cm)
Chamber Length	36" (91 cm)	36" (91 cm)	54" (137cm)	54" (137cm)	54" (137cm)	54" (137 cm)
Chamber Infeed Width	34.5" (88 cm)	58.5" (149 cm)	34.5" (88 cm)	58.5" (149 cm)	34.5" (88 cm)	58.5" (149 cm)
Chamber Infeed Height (adjustable)	2" - 7" (5 - 17.7 cm)	2" - 7" (5 - 17.7 cm)	2" - 7" (5 - 17.7 cm)	2" - 7" (5 - 17.7 cm)	2" - 7" (5 - 17.7 cm)	2" - 7" (5 - 17.7 cm)
Heat Range (@ Heater)	0-900 F* (0-482 C*) @ 240V	0-900 F* (0-482 C*) @ 240V	0-900 F* (0-482 C*) @ 240V	0-900 F* (0-482 C*) @ 240V	0-900F* (0-482C*) @ 240V 0-1150F* (621C*) - booster	0-900F* (0-482C*) @ 240V 0-1150F* (621C*) - booster
Heater Size & Standard Wattage	12" x 24" (30 x 61 cm) 2 @ 3,600 = 7,200 Watts @ 240V  12" x 24" (30 x 61 cm) 2 @ 3,000 = 6,000 Watts @ 380V	12" x 48" (30 x 122 cm) 2 @ 7,200 = 14,400 Watts @ 240V  2 @ 6,000 = 12,000 Watts @ 380V	12" x 24" (30 x 61 cm) 3 @ 3,600 = 10,800 Watts @ 240V  12" x 24" (30 x 61 cm) 3 @ 3,000 = 9,000 Watts @ 380V	12" x 48" (30 x 122 cm) 3 @ 7,200 = 21,600 Watts @ 240V  3 @ 6,000 = 18,000 Watts @ 380V	4 @ 12" x 24" (30 x 61 cm) Zone 1 @ 3,600 Watts Zone 2 @ 7,800 Watts Side Heaters 2 @ 3" x 47" (7.6 x 120 cm) 1,400 watts per side  14,200 Watts Total	4 @ 12" x 48" (30 x 122 cm) Zone 1 @ 7,200 Watts Zone 2 @ 15,600, Watts Side Heaters 2 @ 3" x 47" (7.6 x 120 cm) 1,400 watts per side  25,600 Watts Total
Cost / hour to operate based on 10 cents / kwh	72 cents @ 240V 60 cents @ 380V	\$1.44 @ 240V \$1.20 @ 380V	\$1.08 @ 240V 90 cents @ 380V	\$2.16 @ 240V \$1.80 cents @ 380V	\$1.42 @ 240V	\$2.56 @ 240V
Electrical Specs** Chamber	240V / 32A / 1 Ph. / 3 wire 50/60HZ	240V / 64A / 1 Ph. / 3 wire 50/60HZ	240V / 50A / 1 Ph. / 3 wire 50/60 HZ	240V / 97A /1Ph. / 4 wire / 50/60 HZ	240V / 63A / 1 Ph. / 3 wire 50/60HZ	240V / 70A / 3 Ph. / 4 wire 50/60HZ
Electrical Connection	<b>All amps shown are FLA (Full Load Amps), not recommended line size! Dryers on this page must be hard wired to the power terminal provided. A licensed electrician must be consulted and should refer to articles, 210.20(a), 215.3 and 310 of the NEC code.</b>					
Optional Chamber Power Also available in 440 / 480	240V/ 19A / 3 Ph. / 4 wire / 50/60HZ  380V/ 12A / 3 Ph. / 5 wire / 50/60HZ	240V/ 37A / 3 Ph. / 4 wire / 50/60HZ  380V/ 21A / 3 Ph. / 5 wire / 50/60HZ	240V / 29A / 3Ph. / 4 wire / 50/60 HZ  380V/ 16A / 3 Ph. / 5 wire / 50/60HZ	240V / 55A / 3 Ph. / 4 wire 50/60HZ  380V/ 30A / 3 Ph. / 5 wire / 50/60HZ	240V / 44A / 3 Ph. / 4 wire 50/60HZ  380V/ 22A / 3 Ph. / 5 wire / 50/60HZ	240V / 110A / 1 Ph. / 3 wire 50/60HZ  380V/ 49A / 3 Ph. / 5 wire / 50/60HZ
Shipping Weight**	647 lbs (293 kg)	988 lbs (448 kg)	896 lbs (407 kg)	1,018 lbs (462 kg)	1,018 lbs (462 kg)	1,438 lbs (653 kg)
Shipping Dimensions**	54" x 43" x 60" (137 x 109 x 152 cm)	78" x 49" x 60" (198 x 125 x 153 cm)	61" x 60" x 64" (155 x 152 x 163 cm)	72" x 61" x 63" (183 x 155 x 160 cm)	72" x 61" x 63" (183 x 155 x 160 cm)	92" x 65" x 63" (234 x 161 x 160 cm)

Dryer foot print comparison chart, shown to scale

1 in = 2.54 cm  
1 lb = 0.454 kg



\* Production speeds are estimates are based on 16" centers and will vary depending on ink manufacturer, humidity of shop, and other variables.

\*\*All shipping weights and dimensions are for continental US shipping only. Call for other shipping specifications. Ex-works from Bethlehem, PA.